

LIGNE PRO - MODEL: LGAR5

Linear Luminaires

WAC

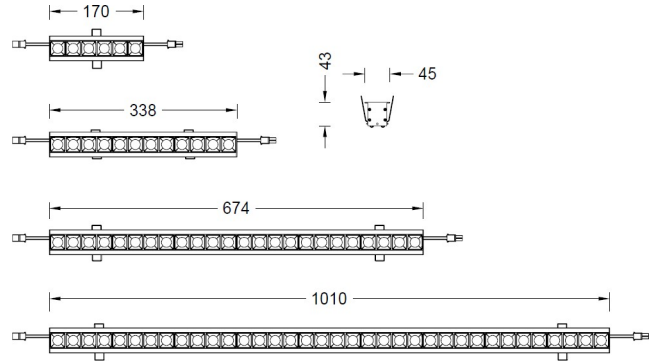
PROJECT:

TYPE:

Product Image



Line Drawing



Product Description

Embedded Graze, using SUBROSA hidden light technology, with multiple light distribution, DC24V input, and can be connected head to tail. Suitable for concealed groove installation linear wall washing applications in hotels and commercial areas

Product Features

- Body Material: Al alloy extruded lamp body
- Optical System: Lens+SUBROSA hidden light system
- Finish: Static electricity powder coating
- Projection direction: /
- Accessories/Brackets: /
- Certification: CQC
- IP Rating: IP20
- Insulation Level: Class III
- Operating Temperature: -20°C~40°C

Product Specifications

- LED Type: SMD
- Opening size: Slot width 37mm
- Ceiling Thickness: 1-25mm
- Shielding Angle: 35°
- Light power: 12W Max
- Source Lm: 1600lm@18W/m;2600lm@30W/m
- LED Lifetime: >50000h-L70 /B10-Ta25°C(LM-80/TM-21)
- CCT/CRI: 2700K, 3000K, 4000K, Ra90
- SDCM: 3 SDCM
- Input: 24V DC
- Dimming: User configured dimming module
- Net Weight: 2.6Kg without packing

Order Model

| Model | Sys Power | LED Num | Length | Driver | Reflector | CCT | Beam | Finish |
|---------------------------------|----------------------|----------|--------|-------------|-----------|----------|----------------|----------------------|
| LGAR5 Linear Graze | 18 18W/m 30 30W/m | 06 6pcs | 170mm | N No driver | B Black | 27 2700K | E 22°x44° | WT White BK Black |
| | | 12 12pcs | 338mm | | | 30 3000K | 1 16° | |
| | | 24 24pcs | 674mm | | | 40 4000K | 2 22° | |
| | | 36 36pcs | 1010mm | | | | 3 33° 4 44° | |

Example: LGAR5-3036N-230BWT

Accessories

/

LIGNE PRO - MODEL: LGAR5

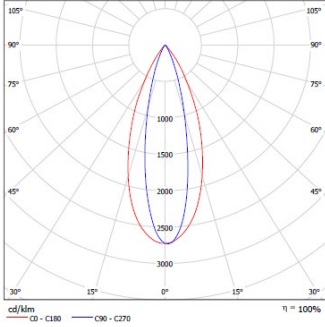
Linear Luminaires

WAC

PROJECT:

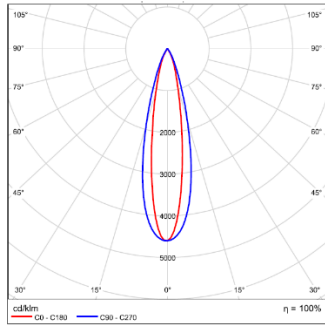
TYPE:

LIGHT DISTRIBUTION@3000K LUMINAIRE DATA



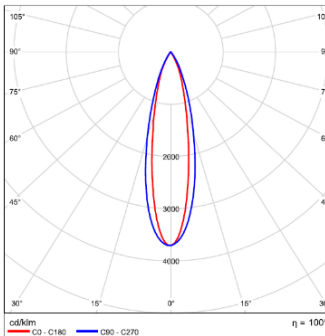
| | |
|--------------|--------------------|
| MODEL : | LGAR5-1836N-E30BBK |
| BEAM ANGLE : | 22°X44° |
| POWER: | 18 W/m |
| LUMENS: | 1002 lm |
| CBCP: | 2509 cd |
| EFFICACY: | 56 lm/W |

| | |
|--------------|--------------------|
| MODEL : | LGAR5-3036N-E30BBK |
| BEAM ANGLE : | 22°X44° |
| POWER: | 30 W/m |
| LUMENS: | 1566 lm |
| CBCP: | 3920 cd |
| EFFICACY: | 52lm/W |



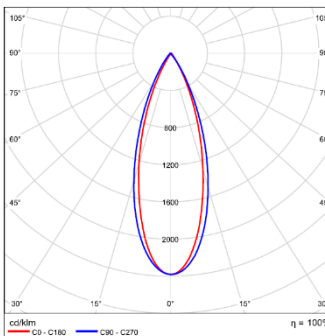
| | |
|--------------|--------------------|
| MODEL : | LGAR5-1836N-130BBK |
| BEAM ANGLE : | 16° |
| POWER: | 18 W/m |
| LUMENS: | 1178 lm |
| CBCP: | 5419 cd |
| EFFICACY: | 65 lm/W |

| | |
|--------------|--------------------|
| MODEL : | LGAR5-3036N-130BBK |
| BEAM ANGLE : | 16° |
| POWER: | 30 W/m |
| LUMENS: | 1840 lm |
| CBCP: | 8467 cd |
| EFFICACY: | 61 lm/W |



| | |
|--------------|--------------------|
| MODEL : | LGAR5-1836N-230BBK |
| BEAM ANGLE : | 22° |
| POWER: | 18 W/m |
| LUMENS: | 1210 lm |
| CBCP: | 4489 cd |
| EFFICACY: | 67 lm/W |

| | |
|--------------|--------------------|
| MODEL : | LGAR5-3036N-230BBK |
| BEAM ANGLE : | 22° |
| POWER: | 30 W/m |
| LUMENS: | 1891 lm |
| CBCP: | 7014 cd |
| EFFICACY: | 63 lm/W |



| | |
|--------------|--------------------|
| MODEL : | LGAR5-1836N-330BBK |
| BEAM ANGLE : | 33° |
| POWER: | 18 W/m |
| LUMENS: | 1213 lm |
| CBCP: | 4489 cd |
| EFFICACY: | 67 lm/W |

| | |
|--------------|--------------------|
| MODEL : | LGAR5-3036N-330BBK |
| BEAM ANGLE : | 33° |
| POWER: | 30 W/m |
| LUMENS: | 1895 lm |
| CBCP: | 7014 cd |
| EFFICACY: | 63 lm/W |

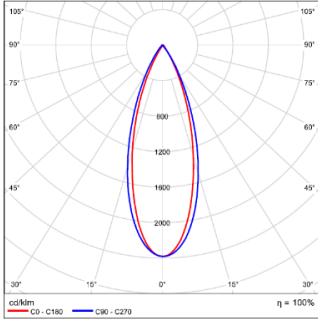
LIGNE PRO - MODEL: LGAR5

Linear Luminaires

WAC

PROJECT:

TYPE:



| | | |
|--------------|---------------------------|---------------------------|
| MODEL : | <u>LGAR5-1836N-430BBK</u> | <u>LGAR5-3036N-430BBK</u> |
| BEAM ANGLE : | <u>44°</u> | <u>44°</u> |
| POWER: | <u>18 W/m</u> | <u>30 W/m</u> |
| LUMENS: | <u>940 lm</u> | <u>1469 lm</u> |
| CBCP: | <u>1507 cd</u> | <u>2354 cd</u> |
| EFFICACY: | <u>52 lm/W</u> | <u>49 lm/W</u> |