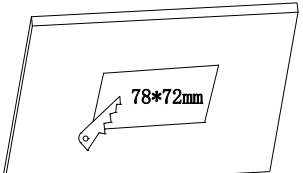
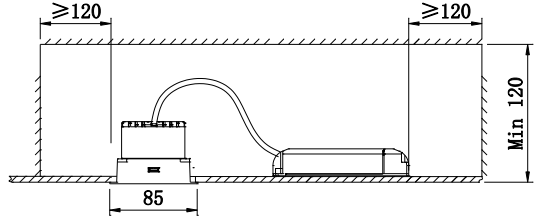
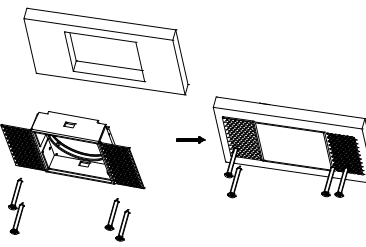
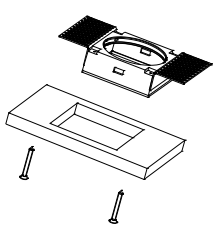
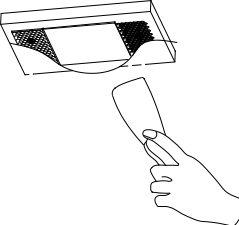
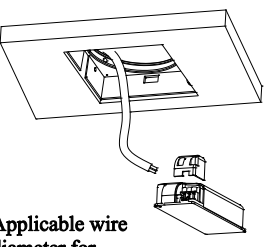
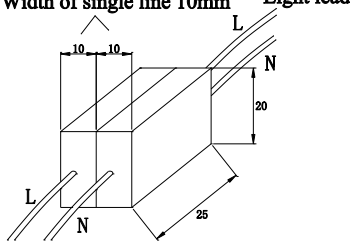
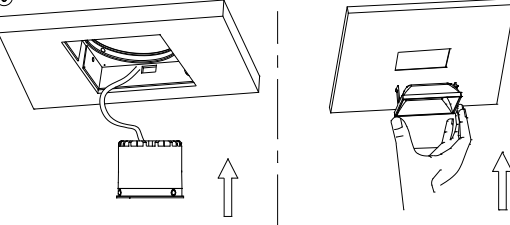


## Installation Precautions:

1. Before installation, please carefully read the instruction manual and operate according to its contents;
2. Qualified electricians are required for installation. To avoid the risk of electric shock, please confirm to turn off the power before installation and maintenance;
3. Suitable for indoor installation and use (not suitable for humid environments);
4. The lighting fixtures can be embedded into the surface of the ceiling, but do not cover them with insulation or flammable materials to avoid causing a fire;
5. Do not install the lighting fixtures on unstable and unstable skylights to prevent them from falling;
6. The light source of this lamp is no replaceable, and once it needs to be replaced (such as at the end of the lamp's lifespan), the entire lamp should be replaced;
7. Keep this manual properly for future use.

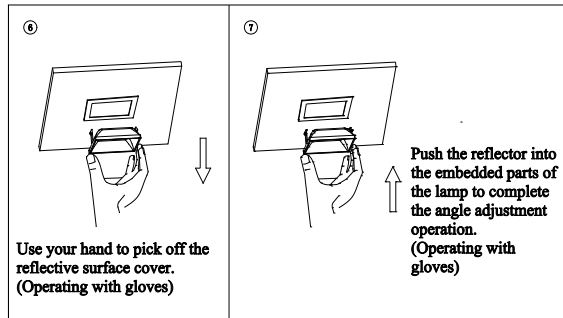
## Light Installation and Wiring:

<p>①</p>  <p><b>Luminaire opening size</b></p>	<p>②</p>  <p>Pinch the shrapnel with your hand and push the light fixture into the ceiling until it is flush with the ceiling</p>	
<p>③</p>  <p><b>Network board installation: front installation</b> Self tapping screw 4PC Applicable ceiling thickness: 5-25mm</p>	<p>④</p>  <p><b>Mesh board installation: back installation</b> Self tapping screw 2PC</p> <p>Adjustable position Applicable ceiling thickness range can be adjusted based on the size of the upper and lower hole positions on the mesh board</p>	<p>⑤</p>  <p>Surface plastering after fixing the mesh board with gypsum or wooden ceiling (schematic diagram)</p>
<p>⑥</p>  <p>Applicable wire diameter for drive input end: 0.75mm<sup>2</sup></p>	<p>⑦</p>  <p>Width of single line 10mm Light leads Incoming Cable Light leads (L,N) and Terminal Block Wiring Diagram</p>	<p>⑧</p>  <p>After connecting the wires, insert the driver first and then press the lamp head into the embedded frame Note: needs to be flattened</p> <p>Take out the reflector cover from the inner box Press in to complete installation (Operating with gloves)</p>

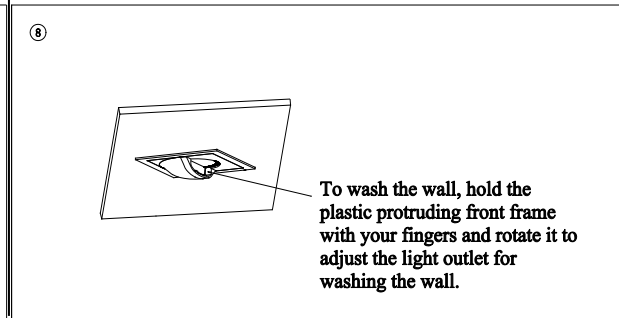
\*If the driver of the lamp comes with a lead wire, and this connecting lead wire needs to be connected to an independent terminal block (refer to the schematic diagram in Figure 7 for wiring, this lamp does not include this terminal block), the size of each terminal block should not be less than 10×20×25mm.

**\*Light fixtures without electrical appliances, which have red black lead wires, cannot be directly connected to 220V AC power. The customer provides their own electrical appliances, which need to be matched with light.**

DLN37 series dismantling reflector cover  
(bottom left image):



DWN35 Wall Wash Light Direction  
(bottom right image):



## Installation Precautions:

1. Before installation, please carefully read the instruction manual and operate according to its contents;
2. Qualified electricians are required for installation. To avoid the risk of electric shock, please confirm to turn off the power before installation and maintenance;
3. Suitable for indoor installation and use (not suitable for humid environments);
4. The lighting fixtures can be embedded into the surface of the ceiling, but do not cover them with insulation or flammable materials to avoid causing a fire;
5. Do not install the lighting fixtures on unstable and unstable skylights to prevent them from falling;
6. The light source of this lamp is no replaceable, and once it needs to be replaced (such as at the end of the lamp's lifespan), the entire lamp should be replaced;
7. Keep this manual properly for future use.

## Light Installation and Wiring:

①

Model	Ceiling opening size (mm)
DLN48-LM18*	105*105
DLN48-LM25*	
MTN48-218*	205*100
MTN48-225*	

②

Min 90  
≥120

Pinch the shrapnel with your hand and push the light fixture into the ceiling until it is flush with the ceiling

③

Network board installation: front installation  
Self tapping screw 4PC  
Applicable ceiling thickness: 5-25mm

④

Mesh board installation: back installation  
Self tapping screw 2PC

⑤

Adjustable position  
Applicable ceiling thickness range can be adjusted based on the size of the upper and lower hole positions on the mesh board

Surface plastering after fixing the mesh board with gypsum or wooden ceiling (schematic diagram)

⑥

Applicable wire diameter for drive input end: 0.75mm<sup>2</sup>

⑦

Width of single line 10mm  
Light leads  
Incoming Cable  
Light leads (L,N) and Terminal Block Wiring Diagram

⑧

After connecting the wires, insert the driver first and then press the lamp head into the embedded frame  
Note: needs to be flattened

Take out the reflector cover from the inner box  
Press in to complete installation  
(Operating with gloves)

\*If the driver of the lamp comes with a lead wire, and this connecting lead wire needs to be connected to an independent terminal block (refer to the schematic diagram in Figure 7 for wiring, this lamp does not include this terminal block), the size of each terminal block should not be less than 10×20×25mm.

\*Light fixtures without electrical appliances, which have red black lead wires, cannot be directly connected to 220V AC power. The customer provides their own electrical appliances, which need to be matched with light.