

**Product Model: EDW1\* series**

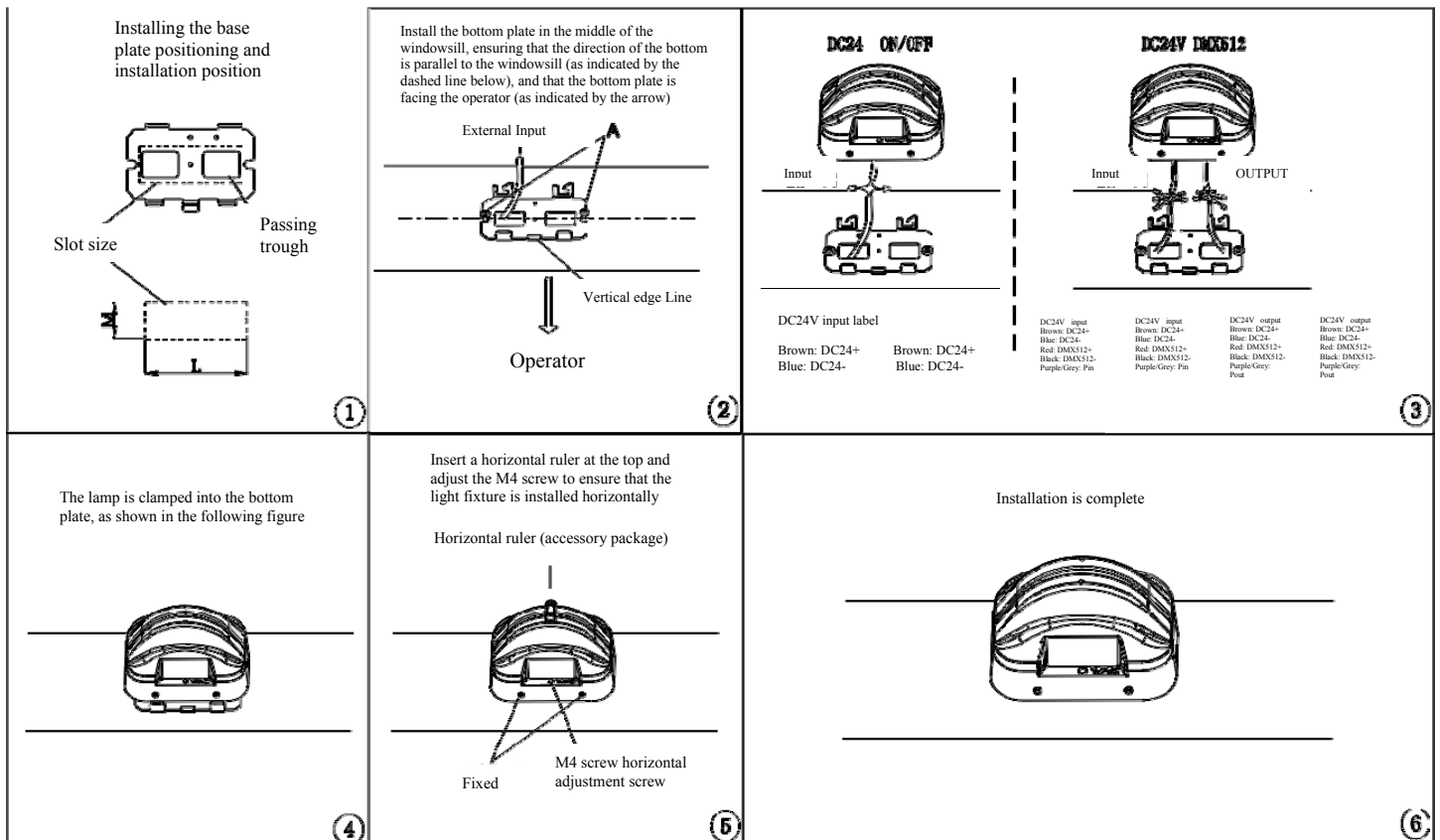
This installation instruction is applicable to LED outdoor windowsill lights

**Installation Precautions:**

1. Please read through the Instructions before installation.
2. The product should be installed by a professional electrician.;
3. Make sure the power supply is cut off before installation and maintenance, to avoid the risk of electric shock.
4. Before installing the lighting fixtures, please confirm that the installation surface is firm and reliable to avoid loosening or detachment of the lighting fixtures
5. Please keep this Instruction properly for future reference.

**Surface mount:**

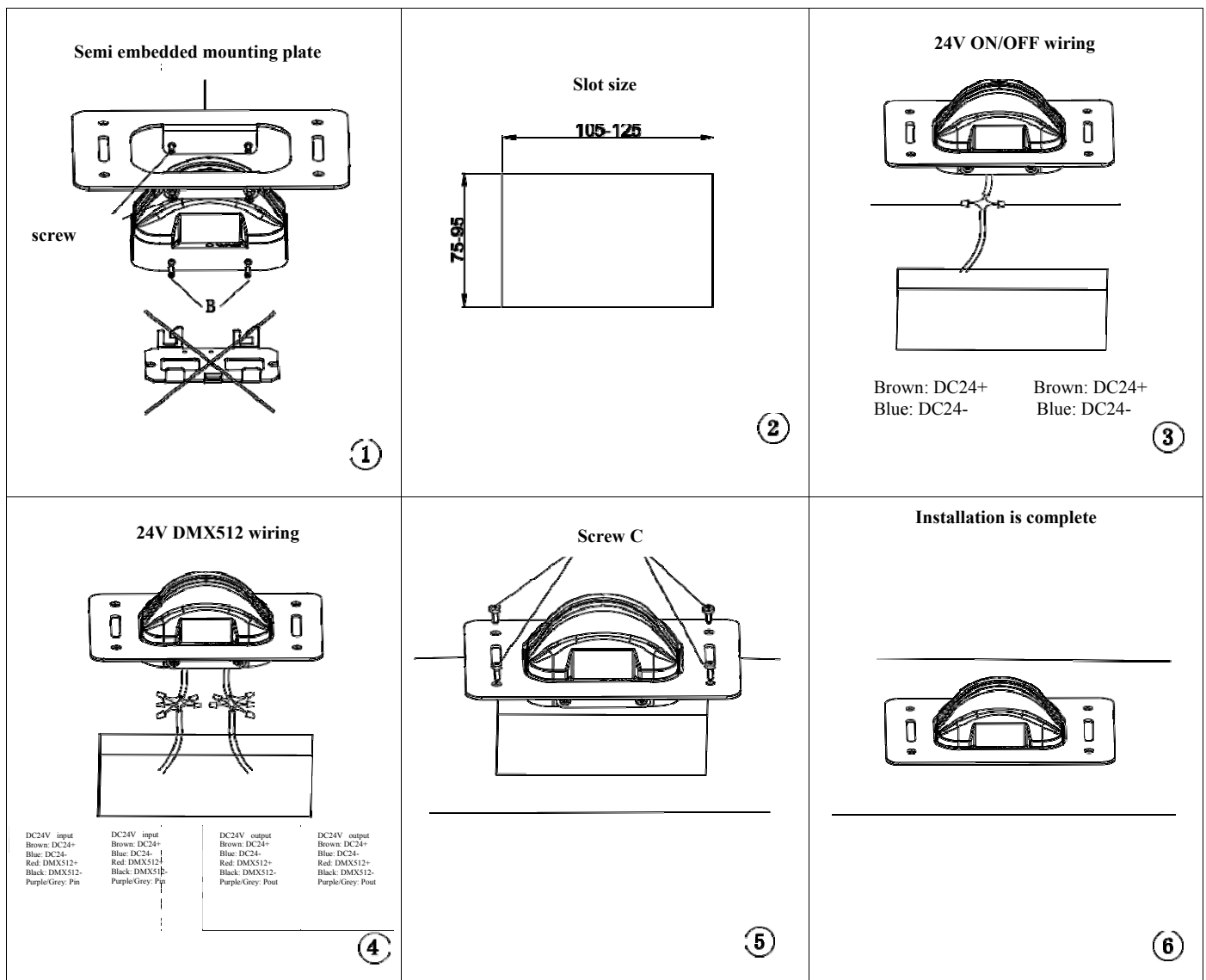
1. As shown in Figure ①, with the help of the installation bottom plate, determine the installation position in the space, determine the slotting position (dashed box), and the slotting size is L \* M=(60-70) \* (20-30), ensuring that the slotting size is  $\geq$  the bottom plate's wire groove, and the slotting depth is  $\geq$  50mm;
2. Install the bottom plate at the designated position above (2 pieces are equipped with large flat head self tapping screws A) as shown in Figure 2, with the vertical edge facing the operator (as indicated by the arrow);
3. The wiring diagram for DC24V input and output is shown in Figure ③;
4. Insert the lighting fixture into the installation base plate, as shown in Figure ④, and plug all wiring into the slot to avoid installation interference;
5. Take out the level ruler from the attachment package and place it at the top of the lamp to assist in the horizontal installation of the lamp. Adjust the M4 stop screw to make the lamp position horizontal and tighten the fixing screw, as shown in Figure ⑤;
6. After the installation of the lighting fixtures is completed, remove the top level as shown in Figure ⑥.



Licensed by "WAC" trademark holder - WAC LIGHTING, USA  
 Chinese Marketing Headquarters : WAC Lighting (Shanghai) Co, Ltd.  
 Address : 14, Lane 299, Bi Sheng Road, Shanghai 201204, China  
 China factory : Manufactured WAC Lighting (Dongguan) Co, Ltd.  
 Address : 390, Qingfeng Road, Qingxi Town, Dngguan, Guangdong. Postal code: 523653

**Semi embedded installation:**

1. Remove the bottom mounting plate and the lateral 4PCS M4 stop screw B, and fix the semi embedded mounting plate to the lamp body with 4PCS M4 screws (accessory package), as shown in Figure ①;
2. The size of the semi embedded installation groove is (75-95) \* (105-125), and the excavation depth is  $\geq 50$ mm, as shown in Figure 2;
3. DC24 ON/OFF wiring reference diagram ③;
4. DC24V DMX512 wiring reference diagram ④;
5. Insert the light fixture into the slot and fix it with 4PCS large flat head screws C (provided by the customer), as shown in Figure ⑤;
6. The installation of the lighting fixtures is completed, as shown in Figure ⑥.



Licensed by "WAC" trademark holder - WAC LIGHTING, USA

Chinese Marketing Headquarters

: WAC Lighting (Shanghai) Co, Ltd.

Address

: 14, Lane 299, Bi Sheng Road, Shanghai 201204, China

China factory

: Manufactured WAC Lighting (Dongguan) Co, Ltd.

Address

: 390, Qingfeng Road, Qingxi Town, Dngguan, Guangdong. Postal code: 523653

**Product Model: EDW1\* series**

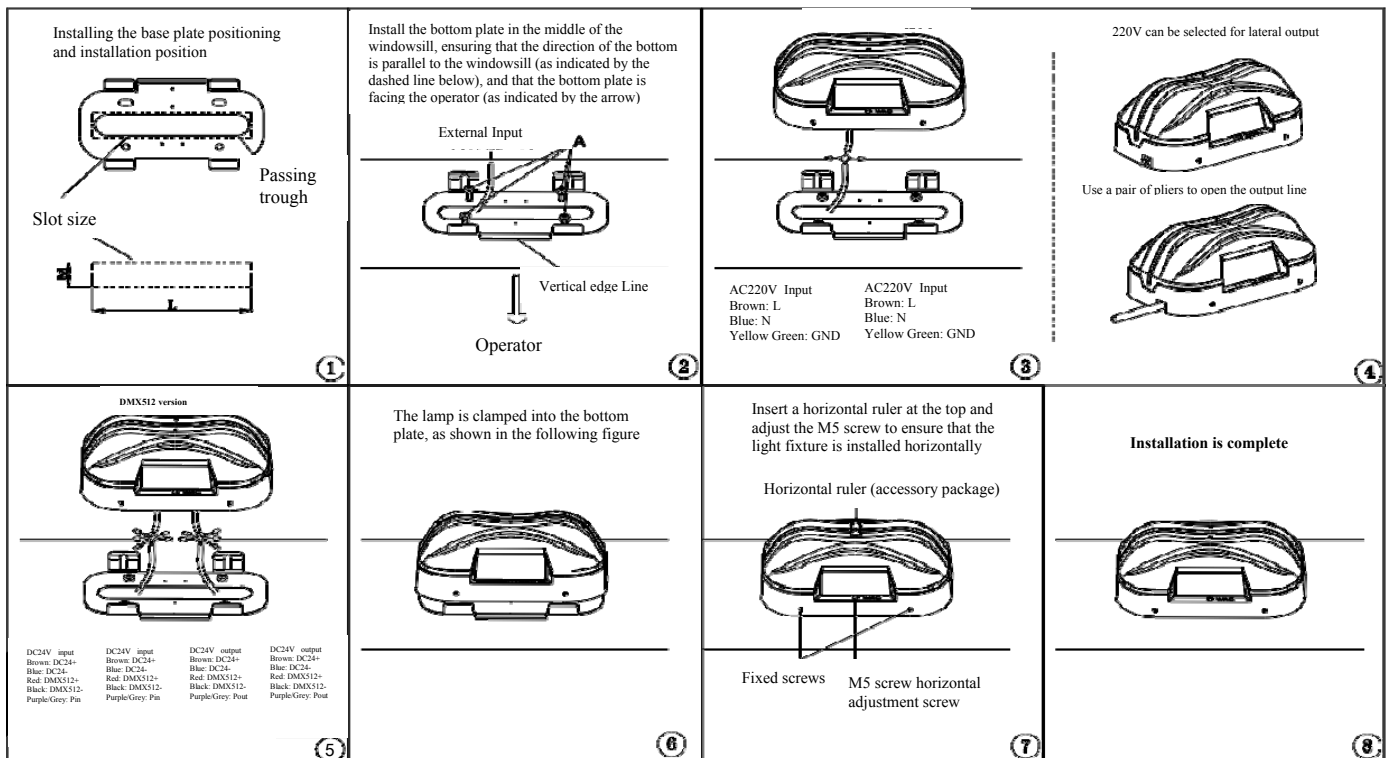
This installation instruction is applicable to LED outdoor windowsill lights

**Installation Precautions:**

1. Please read through the Instructions before installation.
2. The product should be installed by a professional electrician.;
3. Make sure the power supply is cut off before installation and maintenance, to avoid the risk of electric shock.
4. Before installing the lighting fixtures, please confirm that the installation surface is firm and reliable to avoid loosening or detachment of the lighting fixtures
5. Please keep this Instruction properly for future reference.

**Surface mount:**

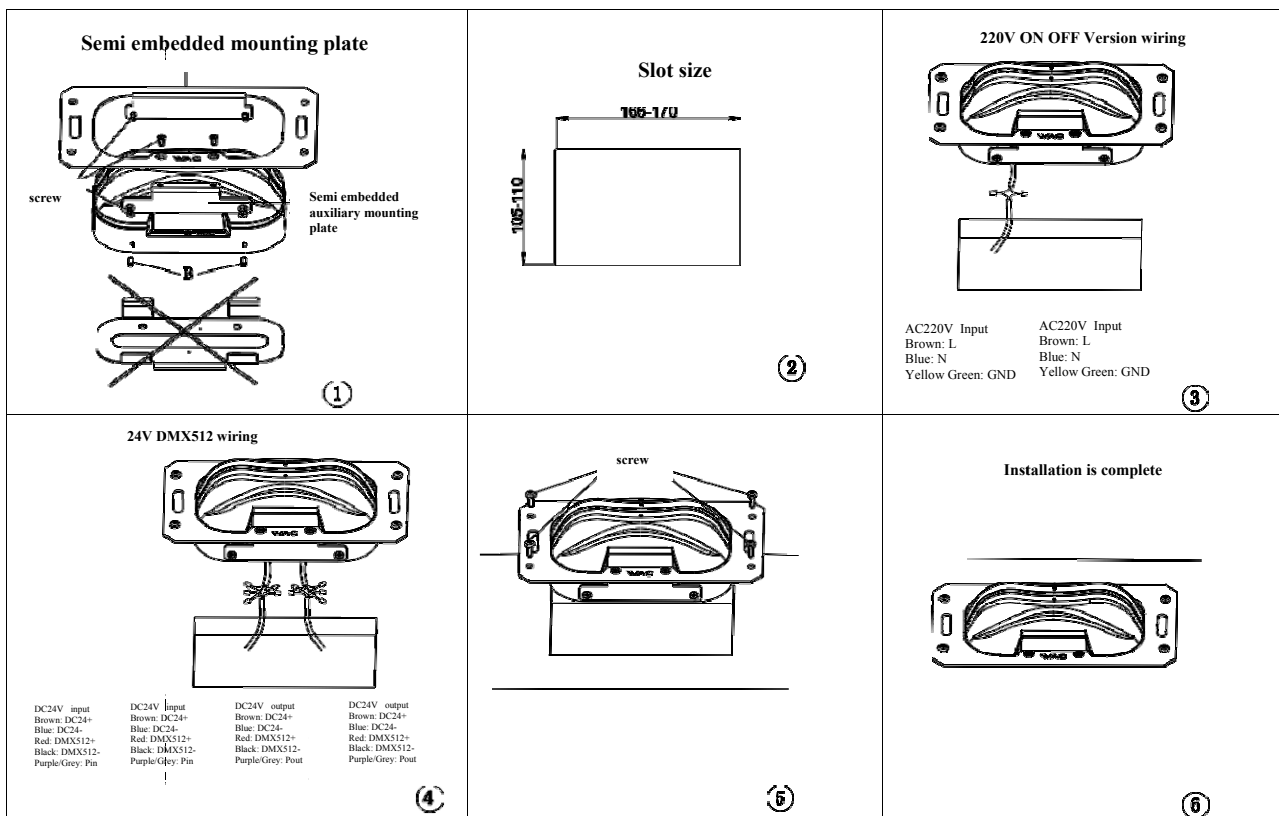
1. As shown in Figure ①, with the help of the installation bottom plate, determine the installation position in the space, determine the slot position (dashed box), and the slot size is L \* M=(135-150) \* (20-30), ensuring that the slot size is ≥ the bottom plate's wire groove, and the depth of the slot is ≥ 60mm;
2. Install the bottom plate at the designated position above (4 pieces are equipped with large flat head self tapping screws A) as shown in Figure 2, with the vertical edge facing the operator (as indicated by the arrow);;
3. The 220V input line wiring is shown in Figure ③;
4. 220V lateral outgoing line (optional solution), use pliers to open the wiring hole, as shown in Figure ④ for lateral outgoing line;
5. The input and output wiring of DC24V DMX512 is shown in Figure ⑤;
6. Insert the lighting fixture into the installation base plate, as shown in Figure ⑥, and plug all wiring into the slot to avoid installation interference;
7. Take out the level ruler from the accessory package and place it at the top of the lamp to assist in the horizontal installation of the lamp. Adjust the M5 stop screw to make the lamp position horizontal, and tighten the fixing screw, as shown in Figure ⑦;
8. After the installation of the lighting fixtures is completed, remove the top level as shown in Figure ⑧.



Licensed by "WAC" trademark holder - WAC LIGHTING, USA  
 Chinese Marketing Headquarters : WAC Lighting (Shanghai) Co, Ltd.  
 Address : 14, Lane 299, Bi Sheng Road, Shanghai 201204, China  
 China factory : Manufactured WAC Lighting (Dongguan) Co, Ltd.  
 Address : 390, Qingfeng Road, Qingxi Town, Dngguan, Guangdong. Postal code: 523653

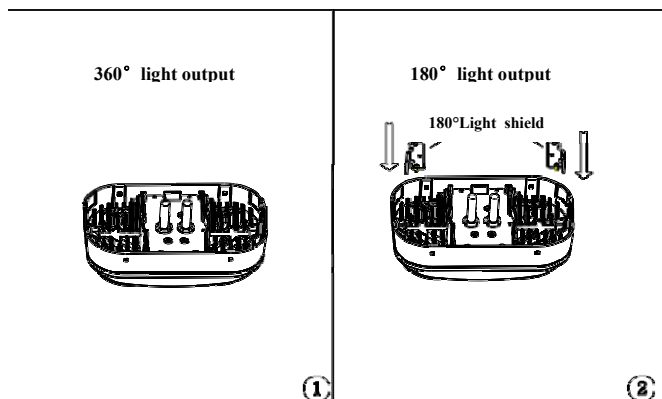
### Semi embedded installation:

1. Remove the bottom mounting plate and the lateral 4PCS M5 stop screws B. Use 6PCS M5 screws (accessory package) to secure the semi embedded mounting plate and semi embedded auxiliary mounting plate to the lamp body, as shown in Figure ①.
2. The size of the semi embedded installation groove is (105-110) \* (166-170), and the excavation depth is  $\geq 60$ mm, as shown in Figure 2.
3. 220V ON/OFF wiring reference diagram ③.
4. DC24V DMX512 wiring reference diagram ④.
5. Insert the lamp into the slot and fix it with 4PCS large flat head screws C (provided by the customer), as shown in Figure ⑤.
6. The installation of the lighting fixtures is completed, as shown in Figure ⑥.



### 360 ° light output and 180 ° light output:

On the 360 ° light output scheme, fix 2 pieces of shading plates (accessory package) with screws to create a 180 ° light output. The installation method is the same as above.



Licensed by "WAC" trademark holder - WAC LIGHTING, USA  
 Chinese Marketing Headquarters : WAC Lighting (Shanghai) Co, Ltd.  
 Address : 14, Lane 299, Bi Sheng Road, Shanghai 201204, China  
 China factory : Manufactured WAC Lighting (Dongguan) Co, Ltd.  
 Address : 390, Qingfeng Road, Qingxi Town, Dngguan, Guangdong. Postal code: 523653