

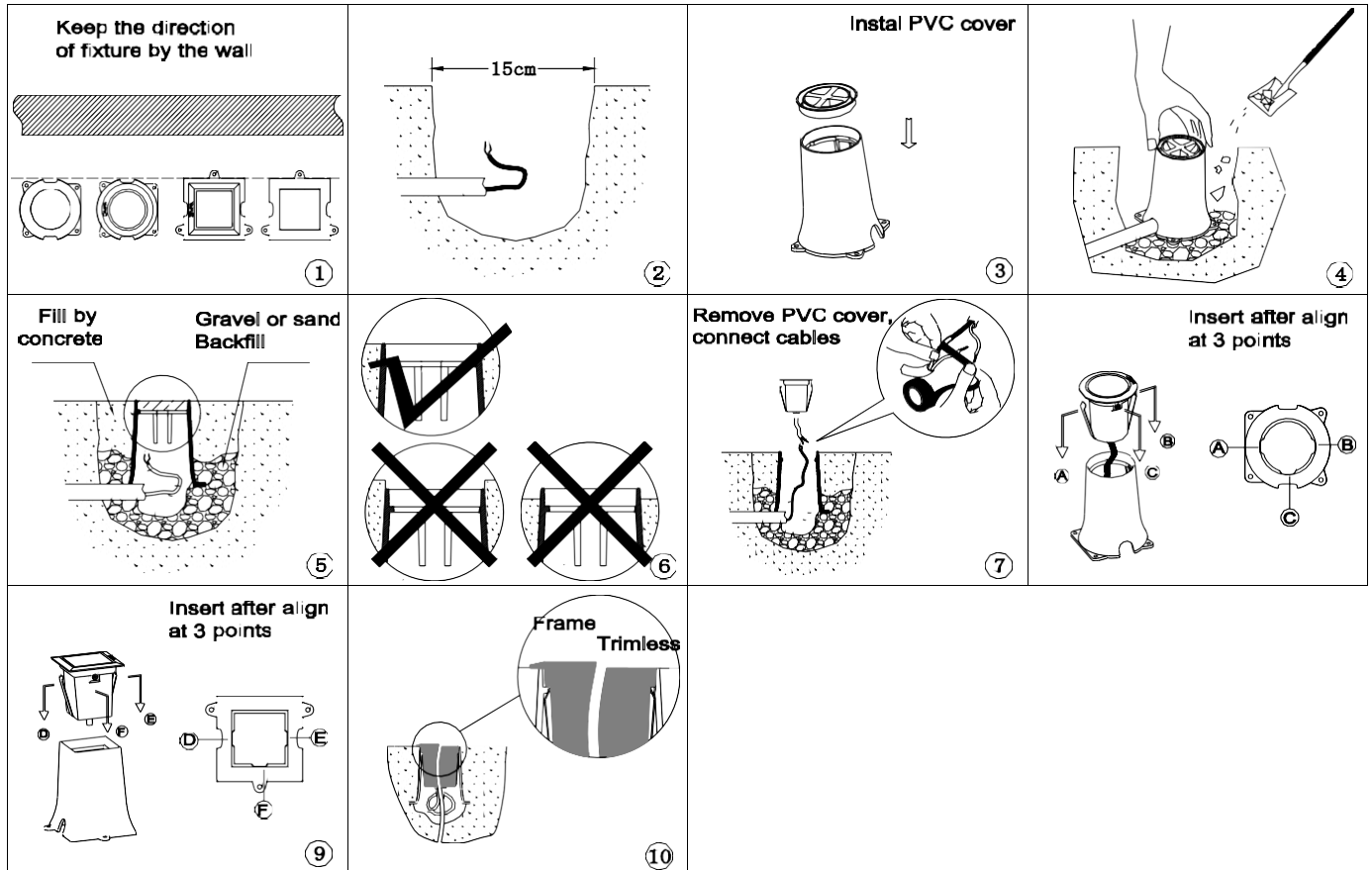
### Safety Instructions:

To reduce the risk of fire, electrical shock and injuries to persons:

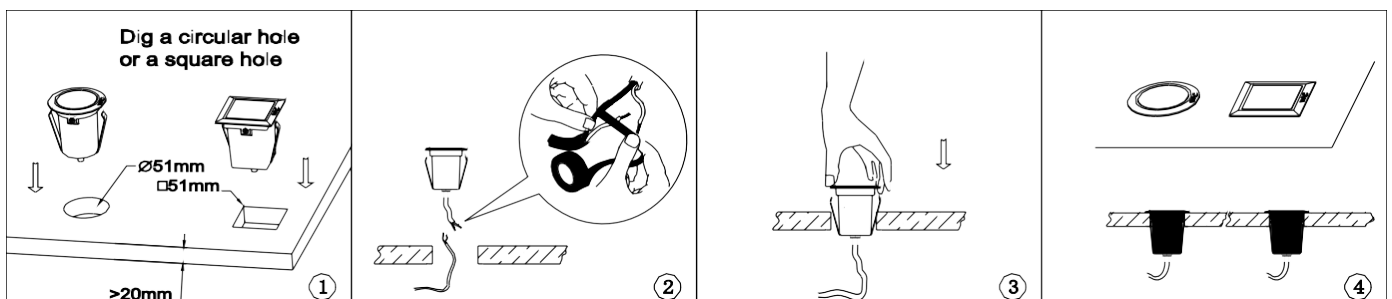
1. Read all instructions before installing.
2. Turn off power at main switch before installing or modifying the system.
3. A qualified electrician must install fixture only.
4. Retain instruction for future maintenance reference.

### Mounting:

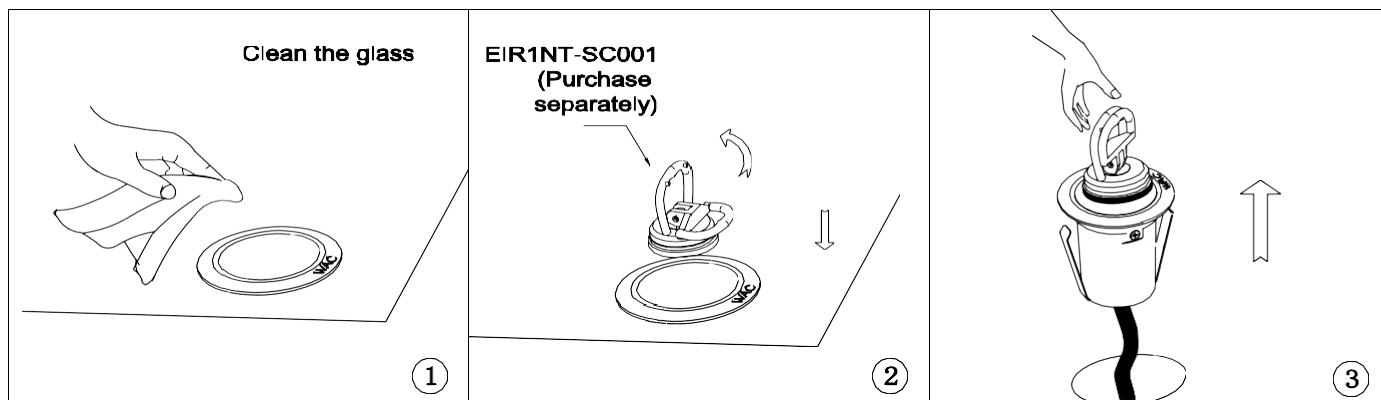
#### 1. Concrete installation



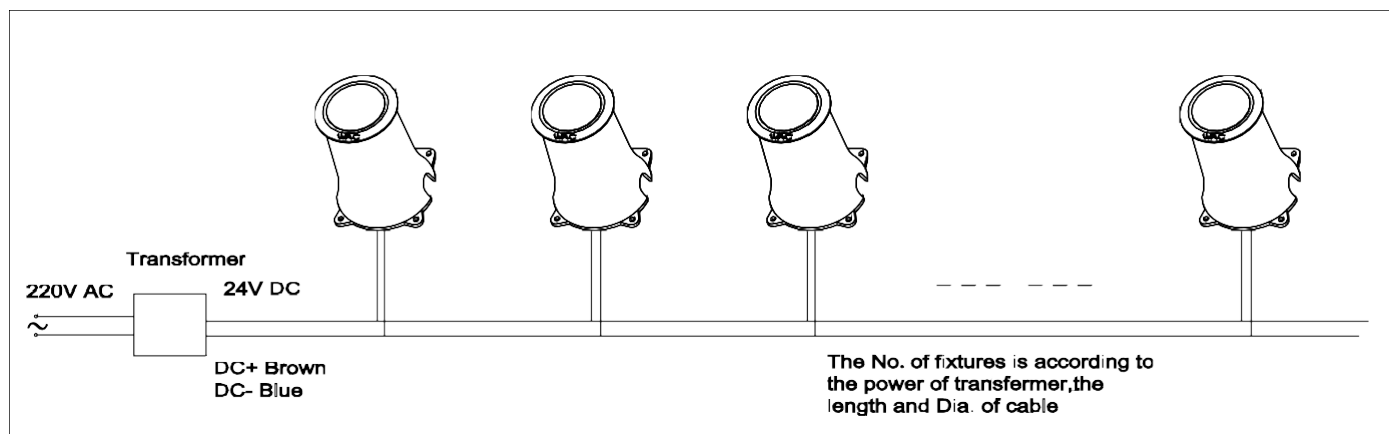
#### 2. Recessed (Not suitable for the trimless fixture)



### 3. Repair



### 4. Wiring



5. The relation of the fixtures' QTY., the transformer's power, the length and Dia. of cable show as below:

Serial No	Power of trans ( W )	Dia. ( mm <sup>2</sup> )	Length ( m )	The QTY of fixtures ( PCS )
1	100	1.0	50	20
2	100	1.0	40	22
3	100	1.0	30	24
4	100	1.0	20	26
5	100	1.0	10	28

Note:

1. The transformer can full load at this sheet; the no. reduce according to the ability of transformer.
2. The calculation about the QTY of fixture: the 40pcs fixtures can connect on a cable on one of the conditions:  
The power is up to 200W; the Dia. is up to 2.0 mm<sup>2</sup>.

WACLIGHTING

"WAC" "Responsible Lighting" trademarks holder is WAC Lighting Co., Ltd which authorizes other firms to use trademarks.

China sale headquarter : WAC Lighting Technology (Shanghai) Co., Ltd.

Address : No. 14, Lane 299, Bi Sheng Road, Zhang Jiang, China (Shanghai) Pilot Free Trade Zone 201204

China factory : WAC Lighting (Dongguan) Co., Ltd.

Address : No.390, Qing Feng Road, Qing Xi Town, Dongguan City, Guangdong Province, China 523653